

Xtreme Products Inc.
Polaris RZR-4 (Crew) / RZR 'S-Type'
2012-Up Models
XTPRZR3
2 Inch Kit

Read these instructions carefully. Xtreme recommends, a professional mechanic perform the installation. Care should be taken to follow all standard safety procedures.

A thorough inspection of the suspension should be made prior to performing the installation. Any worn, bent or broken parts should be replaced. After installation another inspection should be made, checking for loose components or missing hardware. Inspect, again after eight hours of operation.

Components:

The kit consists of two bags containing Hardware and Brackets.

Bag #1 for the Front plus 2 Brackets # XTPRZR3-01

Bag #2 for the Rear plus 2 Brackets # XTPRZR3-02

Disassembly / Installation Procedure

1.) Begin by loosening the lug nuts on both front tires. Raise the unit, using a suitable lifting device or procedure, until the front tires are off the ground. If using a floor jack with stands, chock the rear wheels to prevent the unit from rolling. If using jack stands, make sure the stands are placed under the frame and not the body. Make sure the unit is **stable and secure**.

NOTE: *Now is a good time to check the threads on the lug studs. Check for rust, pulled threads or other deterioration that could cause a stud/thread failure.*

READ THIS PRIOR TO BEGINNING INSTALLATION

3.) Remove both upper bolts holding the shocks in place. Next slide one of the #XTPRZR3-01 brackets along inside rear of factory channel the other bracket goes to the outside front of the channel. **Make sure the folded lip points towards the front of the machine.** Using a 10x50mm bolt, going from rear to front in the factory shock mounting position, insert through factory channel, the Xtreme bracket, supplied short spacer, factory channel, and the other Xtreme bracket. Do not tighten this bolt; just start the nut on the bolt.

Repeat for other side.

NOTE: On some models there is a wiring harness attached to the center of the front crossmember that will have to be taken loose from the frame.

4.) Move the shock back into position. Attach the shock to the Xtreme brackets using the supplied nuts and bolts. You may have to use a pry bar to compress the spring enough to place bolt through brackets. *Since these bikes are new the coils may not have settled enough for you to install the bolt without compressing the coil a small amount.* Repeat for other side. Now, after both sides have been installed, tighten all bolts and readjust shocks.

View from Drivers Side

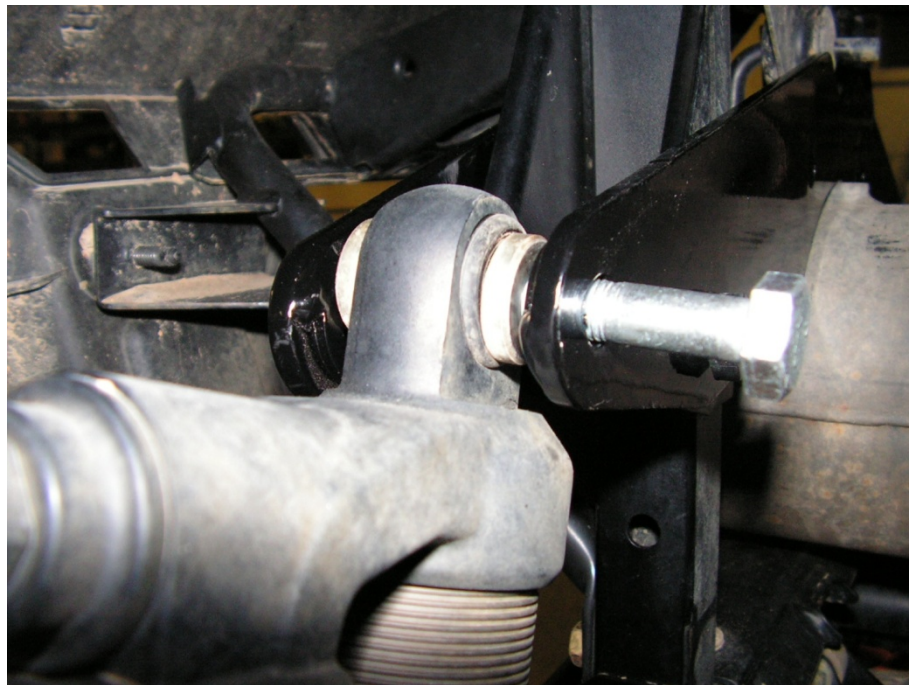


Rear

5.) Begin raising the unit, using a suitable lifting device or procedure, until the rear of the bike is off the ground. If using a floor jack with stands, chock the front wheels to prevent the unit from rolling. If using jack stands, make sure the stands are placed under the frame and not the body. Make sure it is **stable and secure**.

6.) Remove the upper shock mounting bolt on both sides. It is not necessary to completely remove the shock. Position each of the long brackets per photo. One on each side, outside of the frame. **There is a slot cut into one side of each bracket, make sure these slots align with one another. You will also need to place a thick washer between the bracket and the frame at the slots on both brackets.** Take one of the 10x70mm bolts and insert it thru the brackets in the factory shock location. Hold the sleeve in place inside the factory mount. Repeat this procedure on the opposite side. Using the supplied bolts, connect the two brackets in the middle two locations. Move the shock back into position, placing a washer on either side of the shock before installing the supplied bolt. Repeat on the other side. Tighten all bolts at this point.

View from Driver Side



7.) A good “Anti-Seize” compound should be applied to the lug studs and the tire/wheel combination of choice installed. Remove all jacks, jack stands and other devices used to lift and hold the bike. Check all brackets and bolts to be sure everything is tight.

Limited Lifetime Warranty / Warnings

Your Xtreme Products Inc product is covered by the Limited Warranty explained below that gives you specific legal rights. This limited warranty is the only warranty Xtreme makes in connection with your product purchase. Xtreme Products Inc neither assumes nor authorizes any retailer or other person or entity to assume for it any other obligation or liability in connection with this product or limited warranty.

What is covered? Subject to the terms below, Xtreme Products will repair or replace its products found defective in materials or workmanship for so long as the original purchaser owns the ATV/UTV on which the product was originally installed. Your warrantor is Xtreme Products Inc.

What is not covered? Your Xtreme Products Limited Warranty does not cover products, parts or ATVs/UTVs that Xtreme Products determines to have been damaged by or subjected to:

- Alteration, modification or failure to maintain.
- Normal wear and tear (bushings, tie-rod ends, axles, bearings, etc.). Scratches or defects in product finishes (powder coating, plating, etc.),
- Damage to or resulting from racing, competitions, contests, jumping or activity causing the suspension to limit-out.
- Accidents, impact by rocks, trees, obstacles or other aspects of the environment.
- Theft, vandalism or other intentional damage.

Remedy Limited to Repair / Replacement The exclusive remedy provided hereunder shall, upon Xtreme's inspection and at Xtreme's option, be either repair or replacement of product or parts covered under this Limited Warranty. Customers requesting warranty consideration should contact Xtreme Products Inc. by phone (1-888-283-0977) to obtain a Returned Goods Authorization number. All removal, shipping and installation costs are customer's responsibility.

If a replacement part is needed before the Xtreme Products part in question can be returned, you must first purchase the replacement part. Then, if the part in question is deemed warrantable, you will be credited / refunded.

Other Limitations - Exclusion of Damages - Your Rights under State Law

- Neither Xtreme Products nor your independent Xtreme Products dealers are responsible for any time loss, rental costs, or for any incidental, consequential or other damages you may have incurred.
- This Limited Warranty gives you specific rights. You may also have other rights that vary from state-to-state. For example, while all implied warranties are disclaimed herein, any implied warranty required by law is limited to the terms of our Limited Lifetime Warranty as described above. Some states do not allow limitations of how long an implied warranty lasts and / or do not allow the exclusion or limitation of incidental or consequential damages, so the limitations and exclusions herein may not apply to you.

Important Product Use and Safety Information / Warnings

As a general rule, the taller a unit is, the easier it will roll over. Offset, as much as possible, what is lost in rollover resistance by increasing tire track width: In other words, go "wide" as you go "tall". Always use as wide a tire and wheel combination as feasible to enhance vehicle stability. We strongly recommend, because of rollover possibility, you should avoid situations where a side rollover may occur.

Generally, braking performance and capabilities are decreased when significantly larger / heavier tires and wheels are used (take this into consideration while driving).

Also, using tires that are taller or shorter than factory height will cause an erroneous speedometer reading.

Do not add, alter or fabricate any factory or aftermarket parts to increase vehicle height over the intended height of the Xtreme Products product purchased. Mixing or adding different component brands are not recommended.