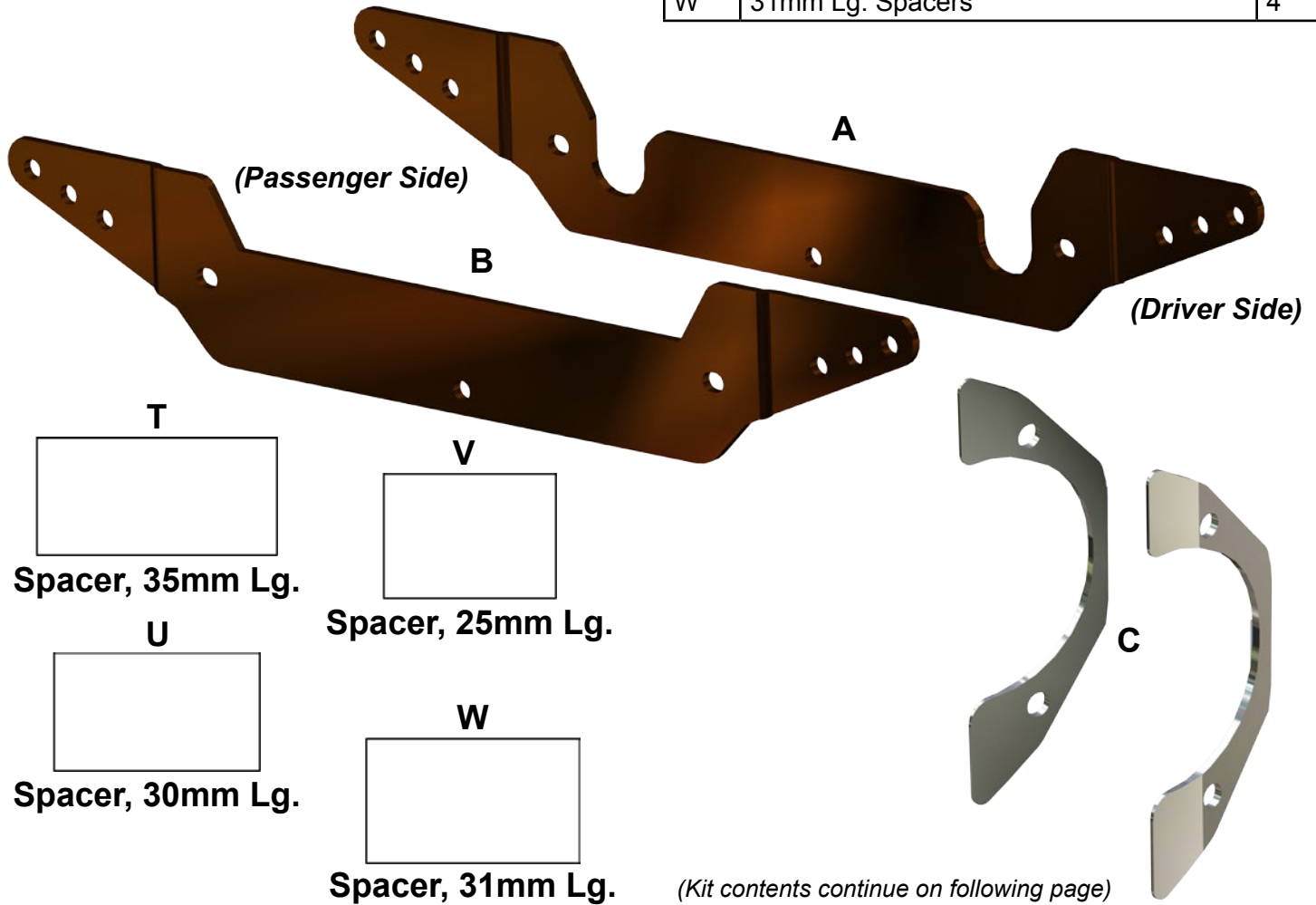


INSTALLATION INSTRUCTIONS

Polaris RZRXP 3"-5" Lift Kit

Item	Description	Qty
A	Front Bracket (Aft)	1
B	Front Bracket (Fore)	1
C	Rear Shims	2

Item	Description	Qty
T	35mm Lg. Spacer	1
U	30mm Lg. Spacers	2
V	25mm Lg. Spacers	2
W	31mm Lg. Spacers	4



Read instructions and view illustrations before beginning.

Need help with your installation?



sales@superatv.com



www.superatv.com



1-812-574-7777



8:00am - 9:00pm EST M-Th
8:00am - 7:00pm EST Friday
9:00am - 2:00pm EST Saturday

Thank You
For Choosing

Liability Statement

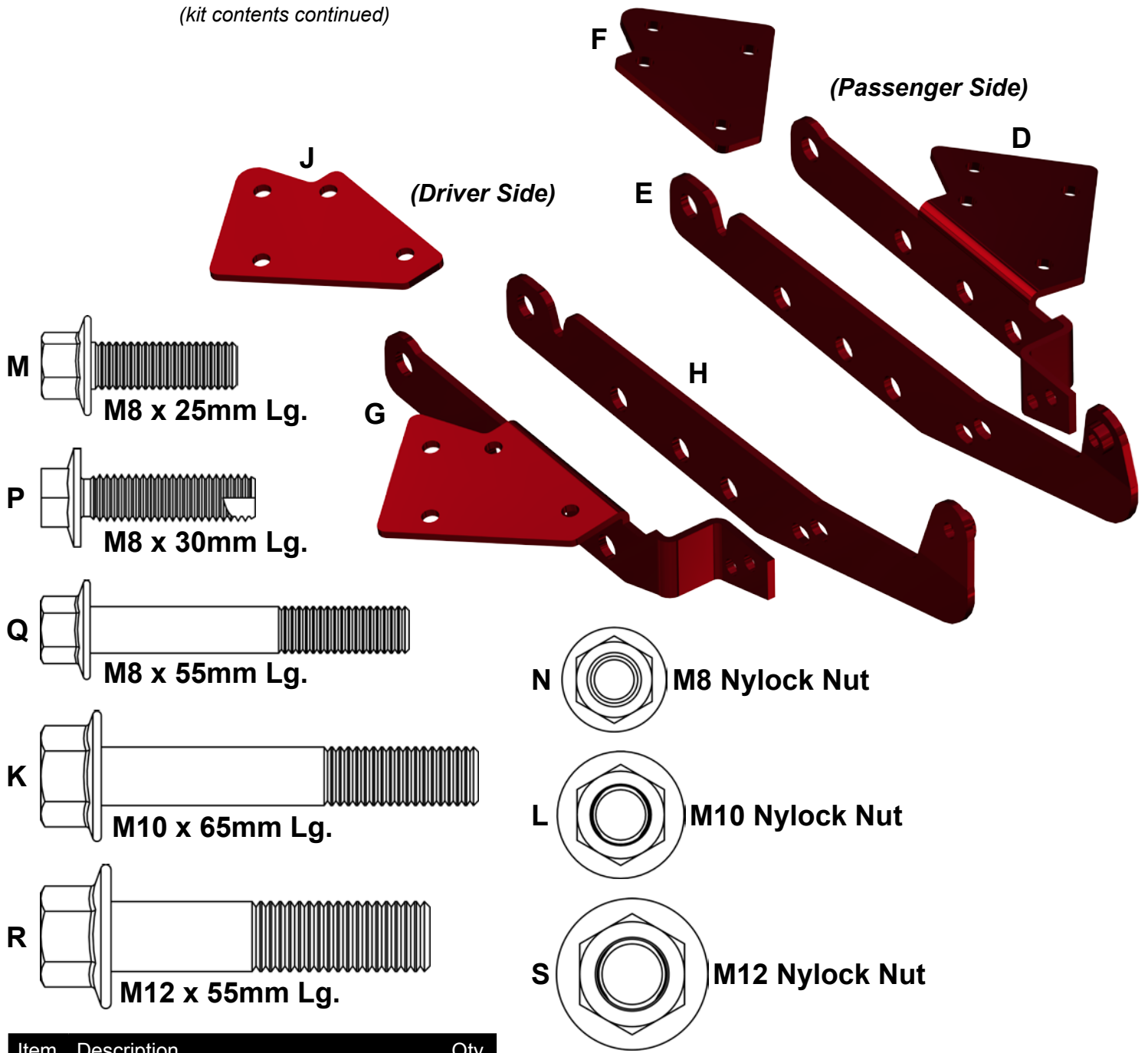
SuperATV's products are designed to best fit users ATV/UTV under stock conditions. Adding, modifying, or fabricating any factory, or aftermarket, parts will void any warranty provided by SuperATV and is not recommended. SuperATV's products could interfere with other aftermarket accessories. If user has aftermarket products on machine, contact SuperATV to verify that they will work together.

Although SuperATV has thousands of satisfied customers, user should be aware that installing lift kits, long travel, or suspension kits, tires, etc will change the ride of machine and may increase maintenance and part wear. Operating any off-road machine while, or after, consuming alcohol and/or drugs increases risk of bodily harm or death. No warranty or representation is made as to this product's ability to protect user from severe injury or death. SuperATV urges operators and occupants to wear a helmet and appropriate riding gear at all times.

By purchasing and installing SuperATV products, user agrees that should damages occur, SuperATV will not be held responsible for loss of time, use, labor fees, replacement parts, or freight charges. SuperATV, nor any 3rd party, will not be held responsible for any direct, indirect, incidental, special, or consequential damages that result from any product purchased from SuperATV. The total liability of seller to user for all damages, losses, and causes of action, if any, shall not exceed the total purchase price paid for the product that gave rise to the claim.

SuperATV will warranty only parts provided by SuperATV. Any damage or problems with OEM housings, bearings, seals, or other manufacturers products will not be covered by SuperATV. SuperATV parts and products are not warranted if item was not installed properly, misused, or modified.

(kit contents continued)



Item	Description	Qty
D	Right Rear Outer Bracket	1
E	Right Rear Inner Bracket	1
F	Right Rear Clamp Block	1
G	Left Rear Outer Bracket	1
H	Left Rear Inner Bracket	1
J	Left Rear Clamp Block	1
K	M10-1.50 x 65mm Lg. FHCS	5
L	M10-1.50 Nylock Nuts, Flange	5
M	M8-1.25 x 25mm Lg. FHCS	4
N	M8-1.25 Nylock Nuts, Flange	12
P	M8-1.25 x 30mm Lg. Self Tapping Bolts	2
Q	M8-1.25 x 55mm Lg. FHCS	8
R	M12-1.75 x 55mm Lg. HHCS	6
S	M12-1.75 Nylock Nuts, Flange	6

Do not tighten hardware completely unless noted.
Keep all stock hardware for reuse.

FRONT

1. Raise front of machine off ground, secure with jack stands. See Figs. 1 - 1a.
 - Remove Wheels.
 - Disconnect Wire Harness from Frame. Reinstall to a convenient location *after* Brackets have been installed.
 - Remove Shocks.
 - Disconnect Differential Vent Tube. Reinstall to a convenient location *after* Brackets have been installed.
2. Install *optional* Steering Stop Kit to Rack and Pinion. Kit prevents over extension of Axles, when reversing under hard throttle, by limiting steering range. See page 4.
3. Install Front Brackets (A)(B) to *outsides* of Frame. See Front Brackets Installation Fig. 2, page 5.
 - Secure Front Brackets (A)(B) with M10-1.50 x 65mm Lg. FHCS (K), M10-1.50 Nylock Nuts, Flange (L), 30mm Lg. Spacers (U), and 35mm Lg. Spacer (T). See Front Brackets Installation Fig. 2, page 5.
 - Select desired lift setting and reinstall Shocks with M10-1.50 x 65mm Lg. FHCS (K) and M10-1.50 Nylock Nuts, Flange (L). See Front Lift Settings, page 5.
4. Reinstall necessary components and tighten all hardware completely.

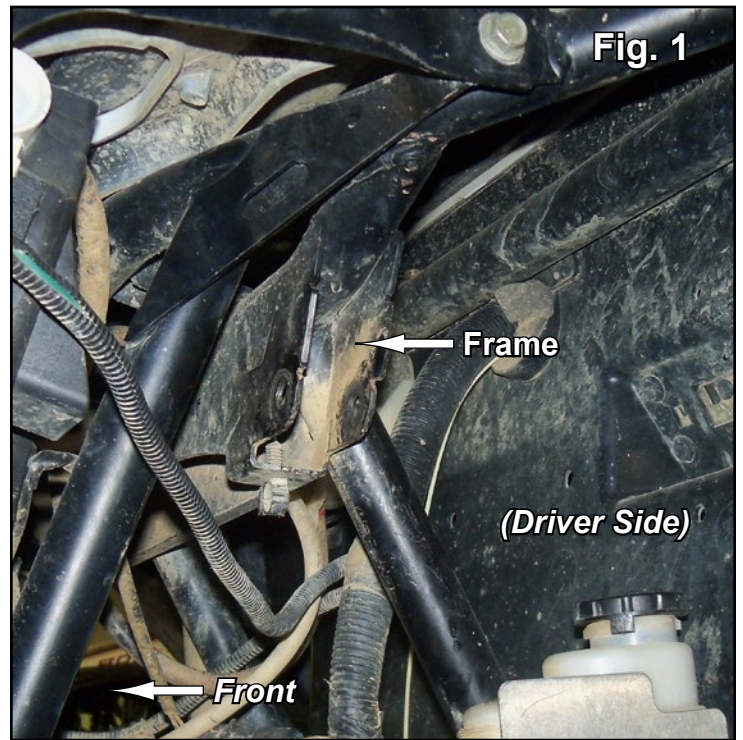
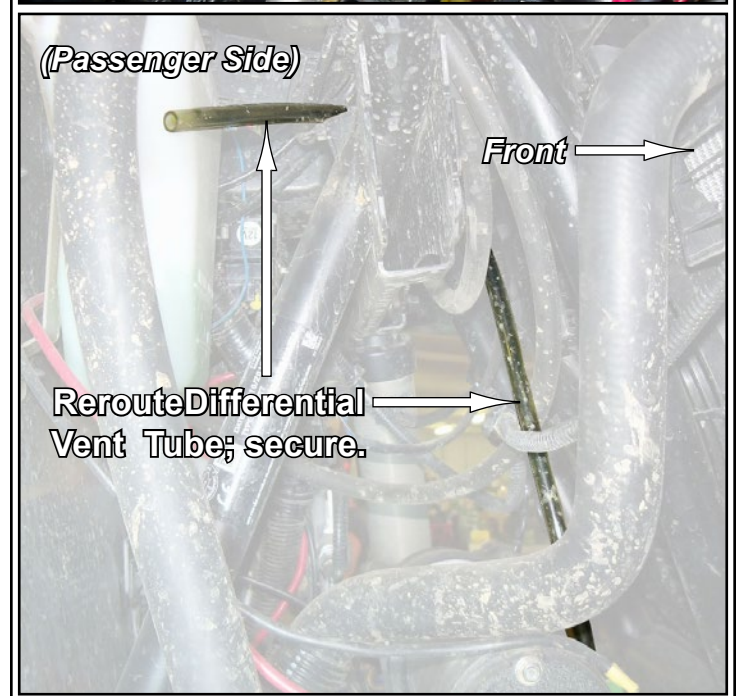
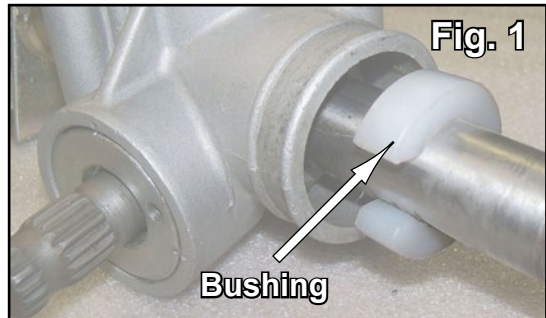
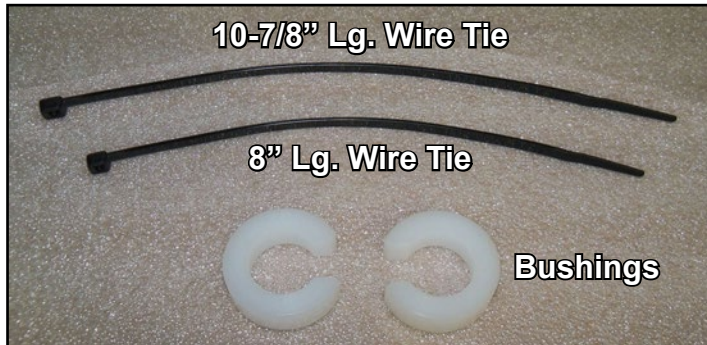


Fig. 1a

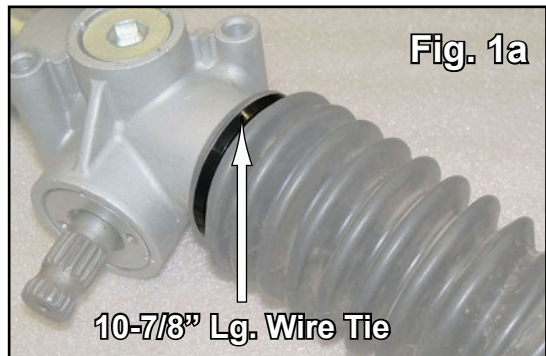


Steering Stop Installation (Rack and Pinion shown off machine for clarity)

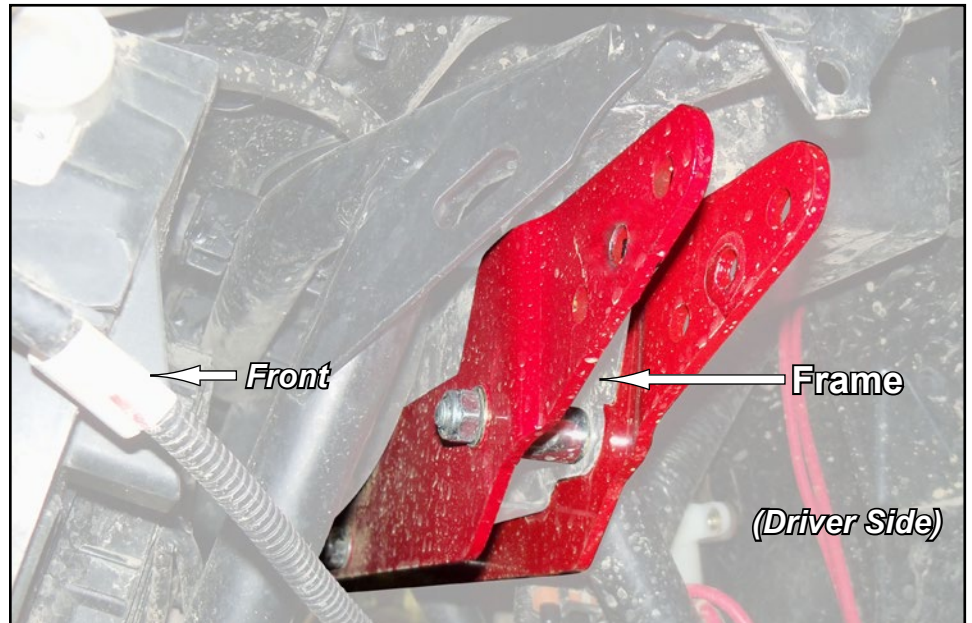
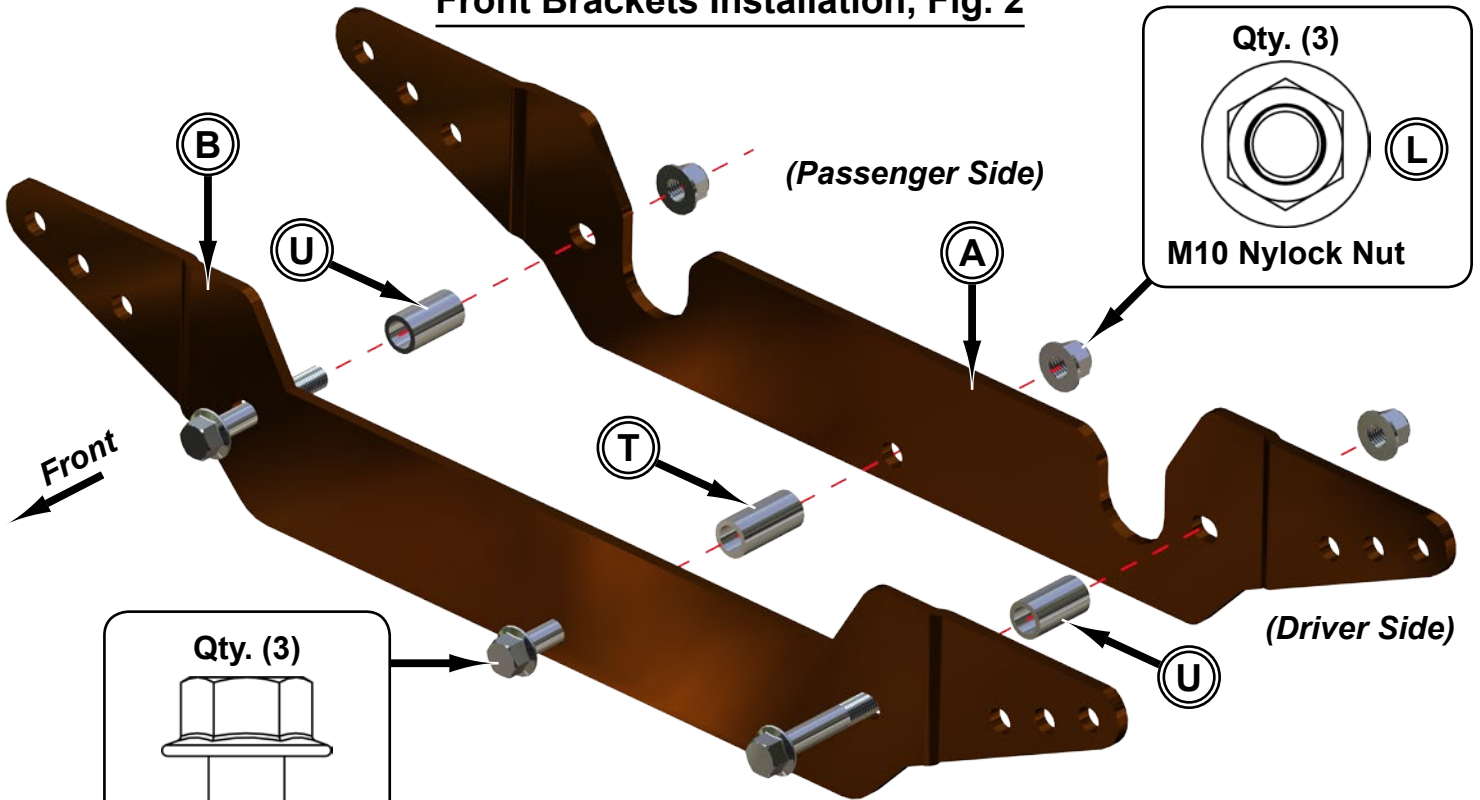


Note: Driver Side installation is shown.

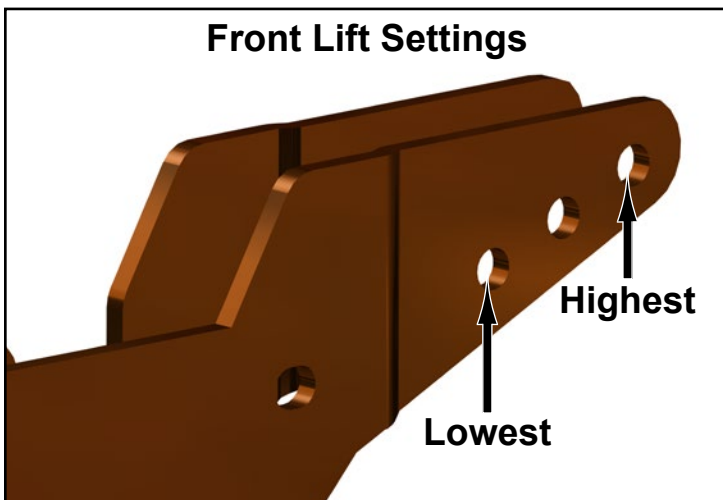
1. Unclamp and slide Boot away from Steering Gear Box.
 2. Install Bushings onto shaft. See Fig. 1.
 3. Reinstall Boot with 10-7/8" Lg. Wire Tie. See Fig. 1a.
- Repeat steps for opposite side.



Front Brackets Installation, Fig. 2



Front Lift Settings

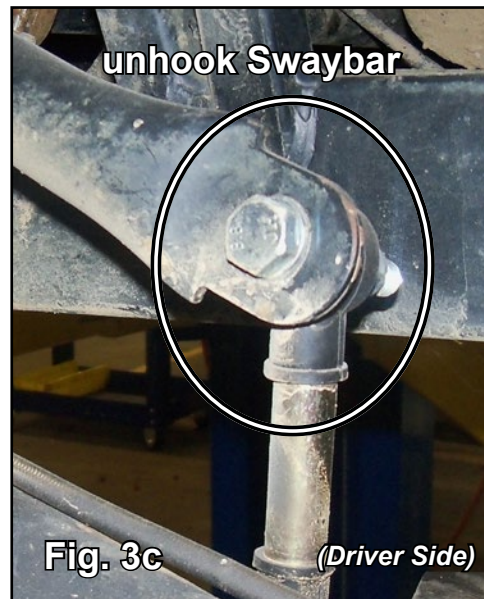
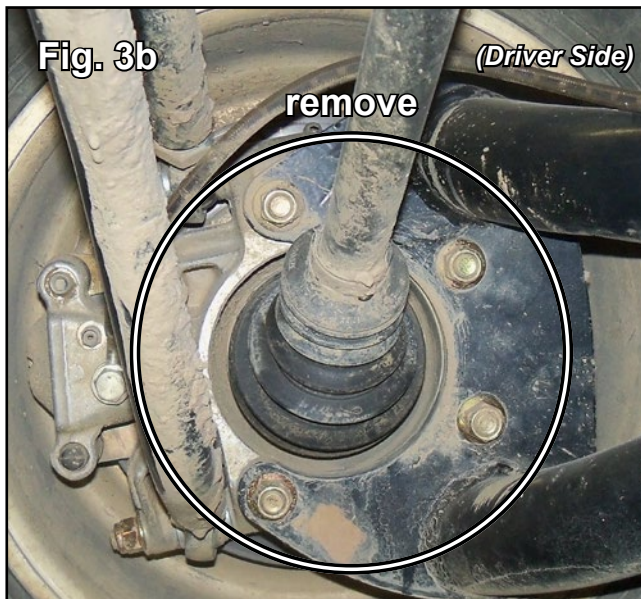
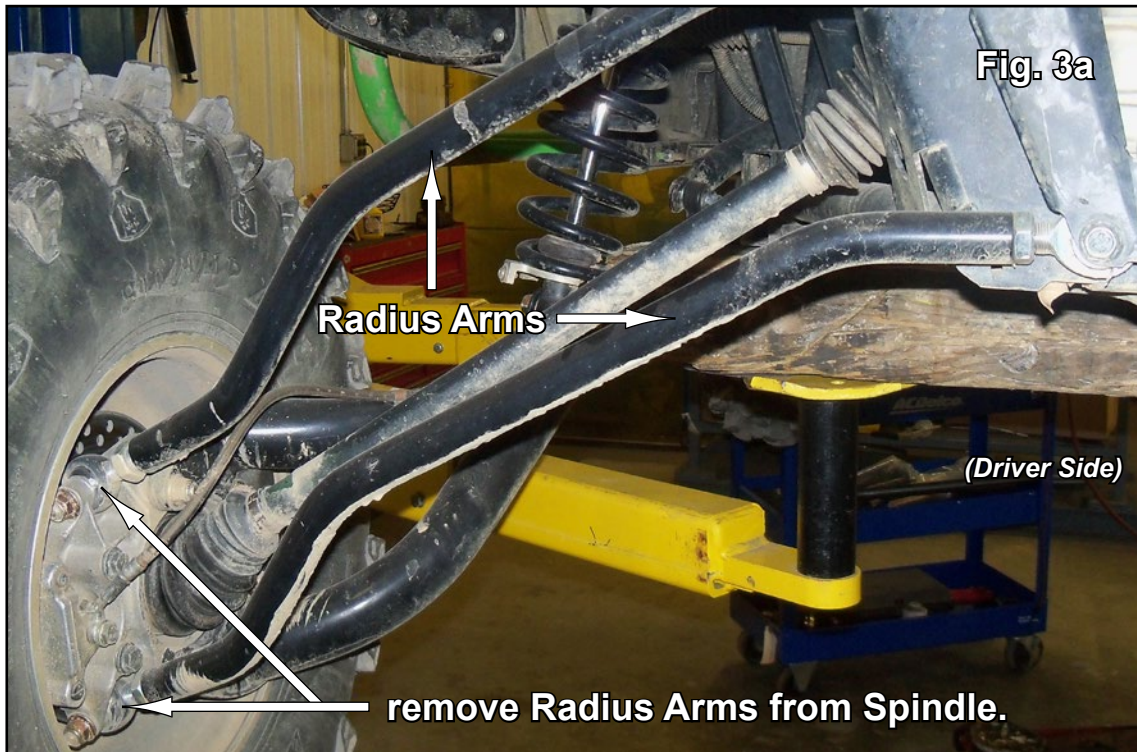
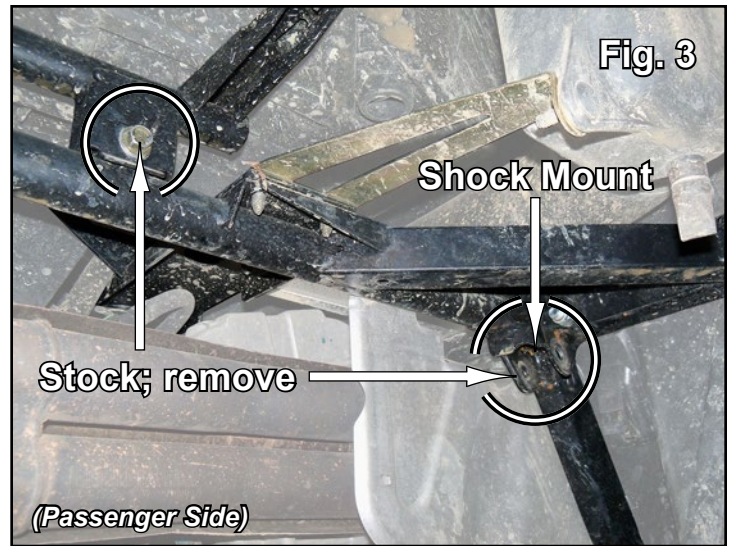


PARTS REFERENCE

Item	Description
A	Front Bracket (Aft)
B	Front Bracket (Fore)
K	M10-1.50 x 65mm Lg. FHCS
L	M10-1.50 Nylock Nuts, Flange
T	35mm Lg. Spacer
U	30mm Lg. Spacers

Rear Removal *Keep all stock hardware for reuse.*

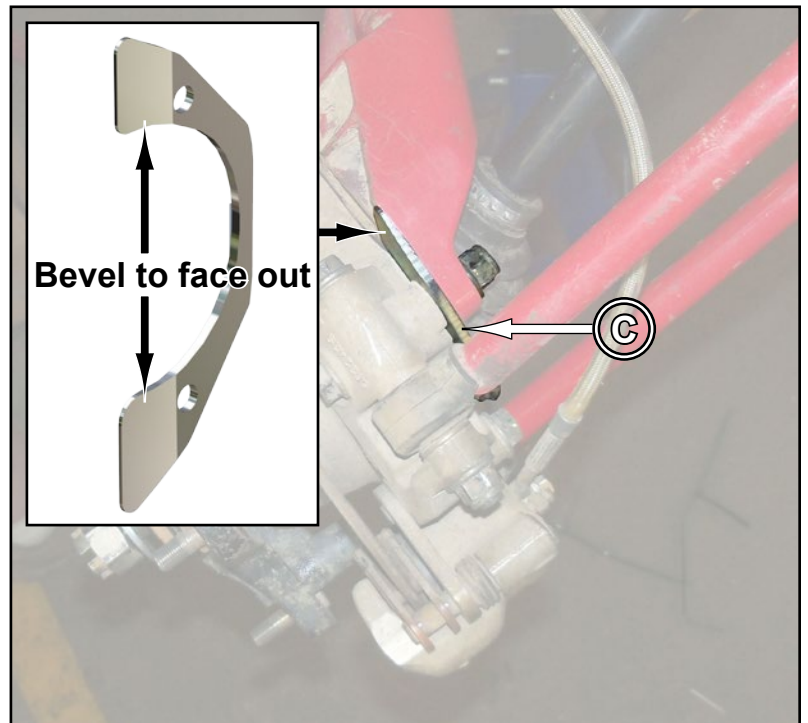
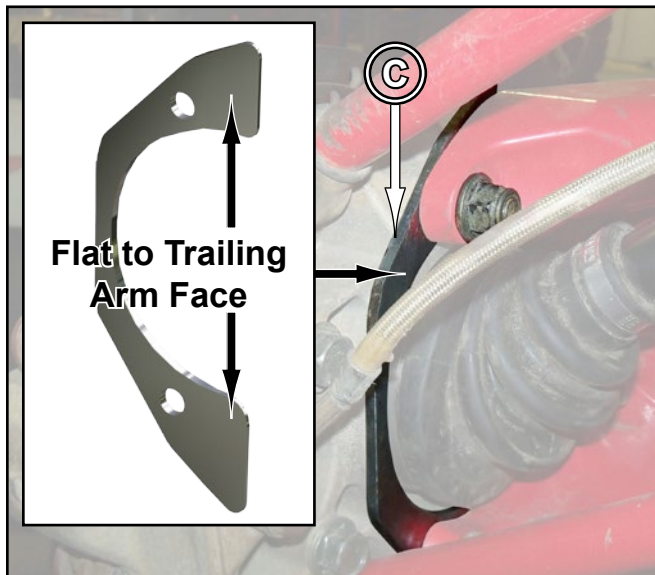
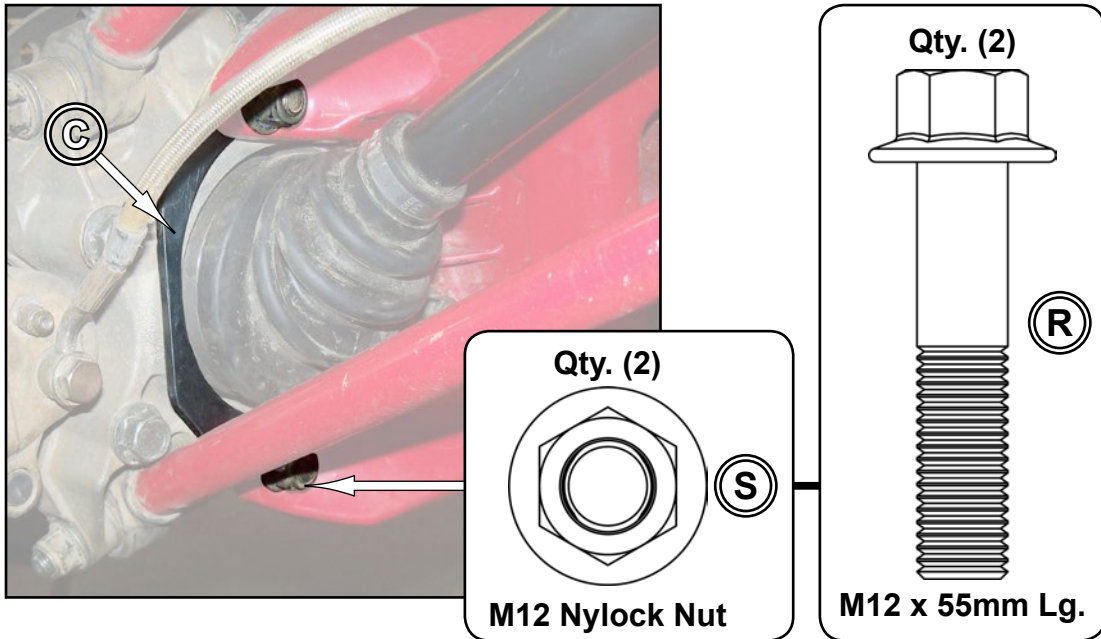
1. Raise rear of machine off ground, secure with jack stands, remove Wheels, and Shocks (upper) from Shock Mount. See Fig. 3.
2. Unbolt Sway Bar. See Fig. 3c.
 - Remove RSL's from Spindles. See Fig. 3a.
 - Remove Trailing Arms from Spindles. See Fig. 3b.
3. Install Rear Shims (C). See page 8.
4. Install new Axles.
 - Reinstall components from Step 2.
 - Tighten hardware completely.



Rear Shim Installation

1. Install Rear Shim (C) between Spindle and Trailing Arm with M12-1.75 x 55mm Lg. FHCS (R) and M12-1.75 Nylock Nuts, Flange (S). Bevel will face outside.
- Tighten hardware completely and repeat steps for opposite side.

Driver Side shown in illustrations

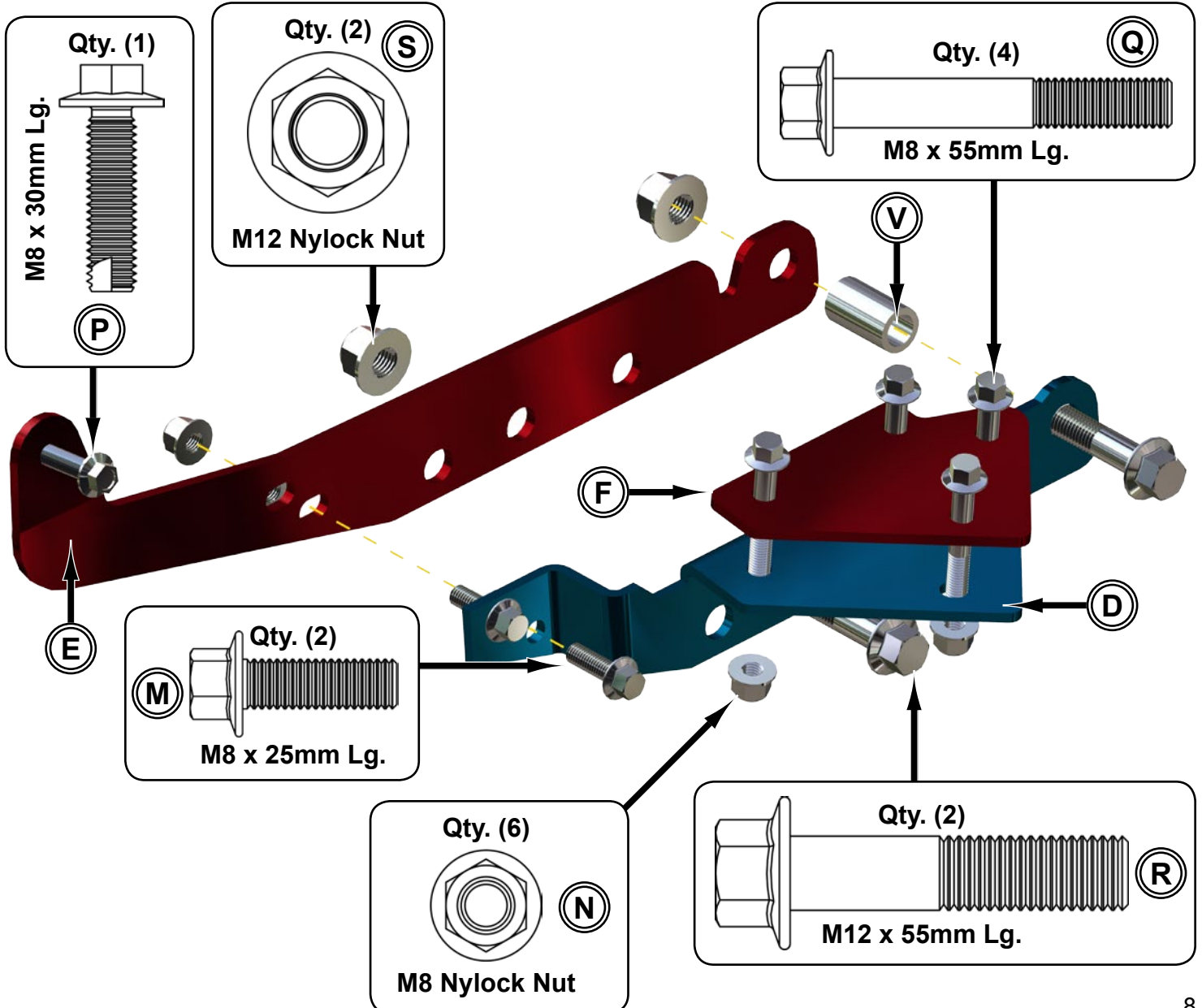


Rear Brackets Installation *Do not tighten hardware completely unless noted.*

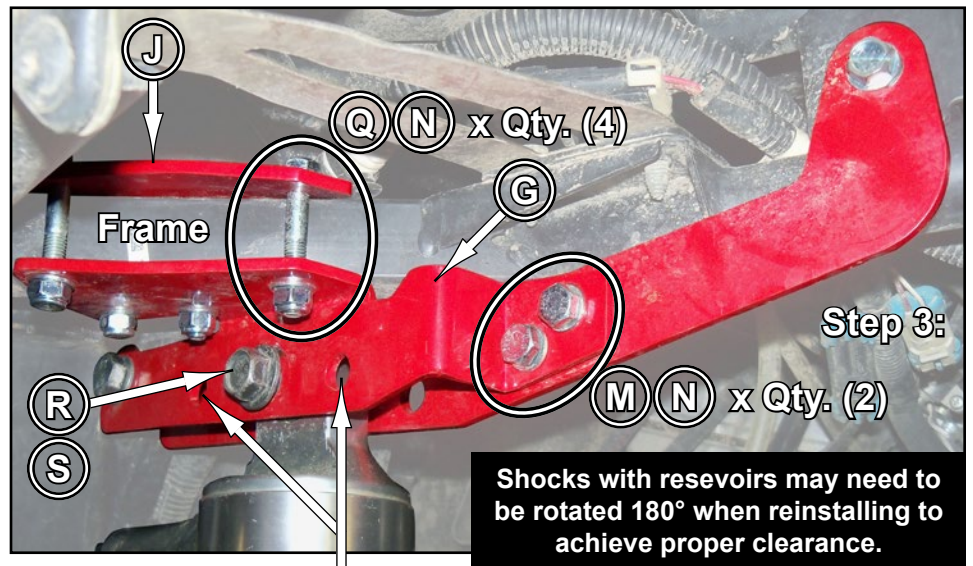
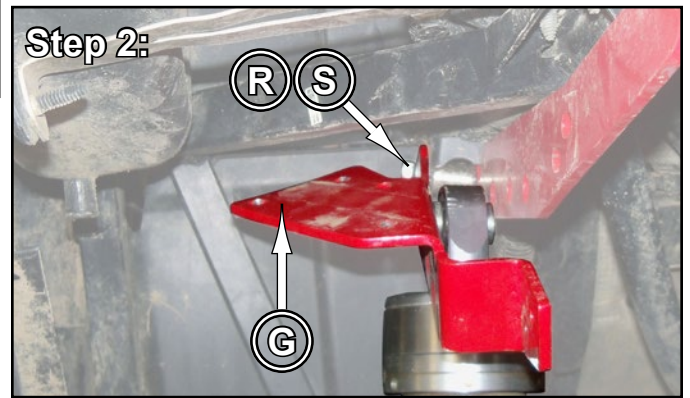
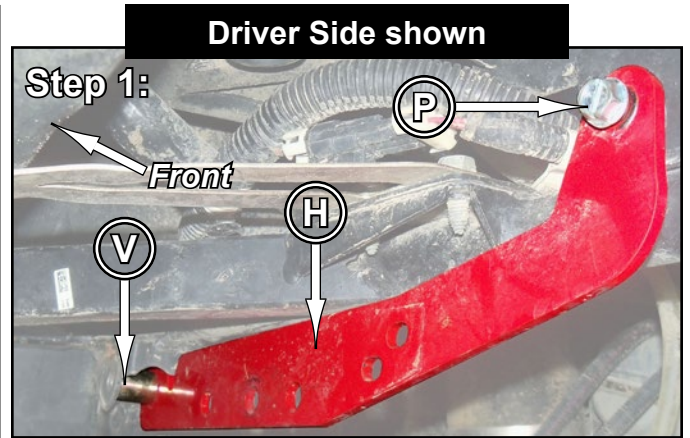
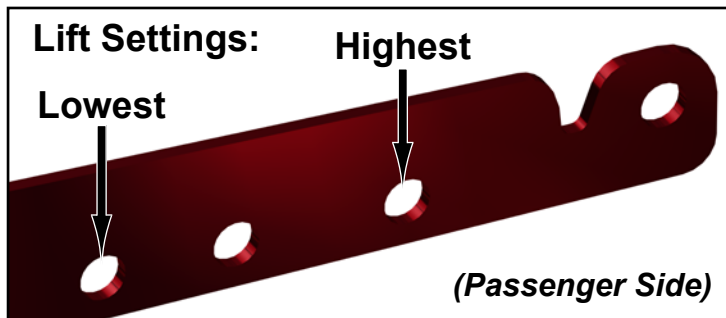
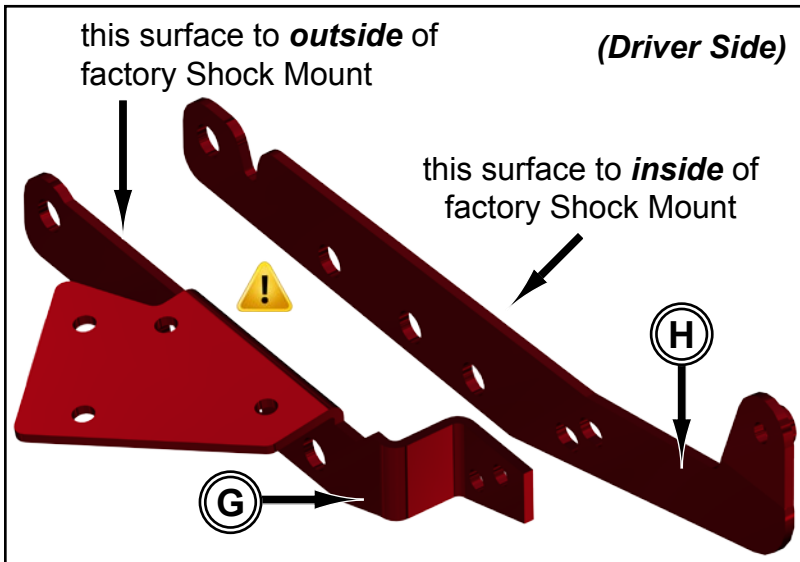
1. Install Rear Inner Bracket (H) to **inside** of Shock Mount and Frame. Secure to Frame with M8-1.25 x 30mm Lg. Self Tapping Bolt (P). Install Spacer (V) at this time. See Step 1.
2. Rear Outer Bracket (G) to **outside** of Shock Mount. Insert Shock at this time and secure Rear Inner and Outer Brackets (H)(G) with M12-1.75 x 55mm Lg. HHCS (R) and M12-1.75 Nylock Nut, Flange (S). See Step 2.
3. Install Left Rear Clamp Block (J) over Frame and to Rear Outer Bracket (G) with M8-1.25 x 55mm Lg. FHCS (N) and M8-1.25 Nylock Nuts, Flange (N). See Step 3.
 - Secure Shock with M12-1.75 x 55mm Lg. HHCS (R) and M12-1.75 Nylock Nut, Flange (S). See Step 3.
 - Join Rear Inner and Outer Brackets (H)(G) with M8-1.25 x 25mm Lg. FHCS (M) and M8-1.25 Nylock Nuts, Flange (N). See Step 3.
4. Tighten hardware completely and repeat steps for opposite side.

- Rear Bracket installation illustrations on page 9 -

Rear Brackets Reference (Passenger Side shown)

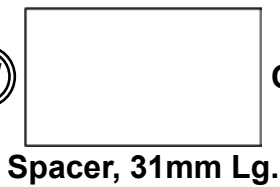


Rear Brackets Installation continued

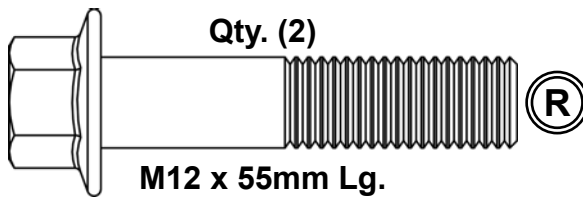


After Shocks have been installed, add hardware to remaining holes in Rear Brackets.

(W)



Qty. (2)



Qty. (2)

